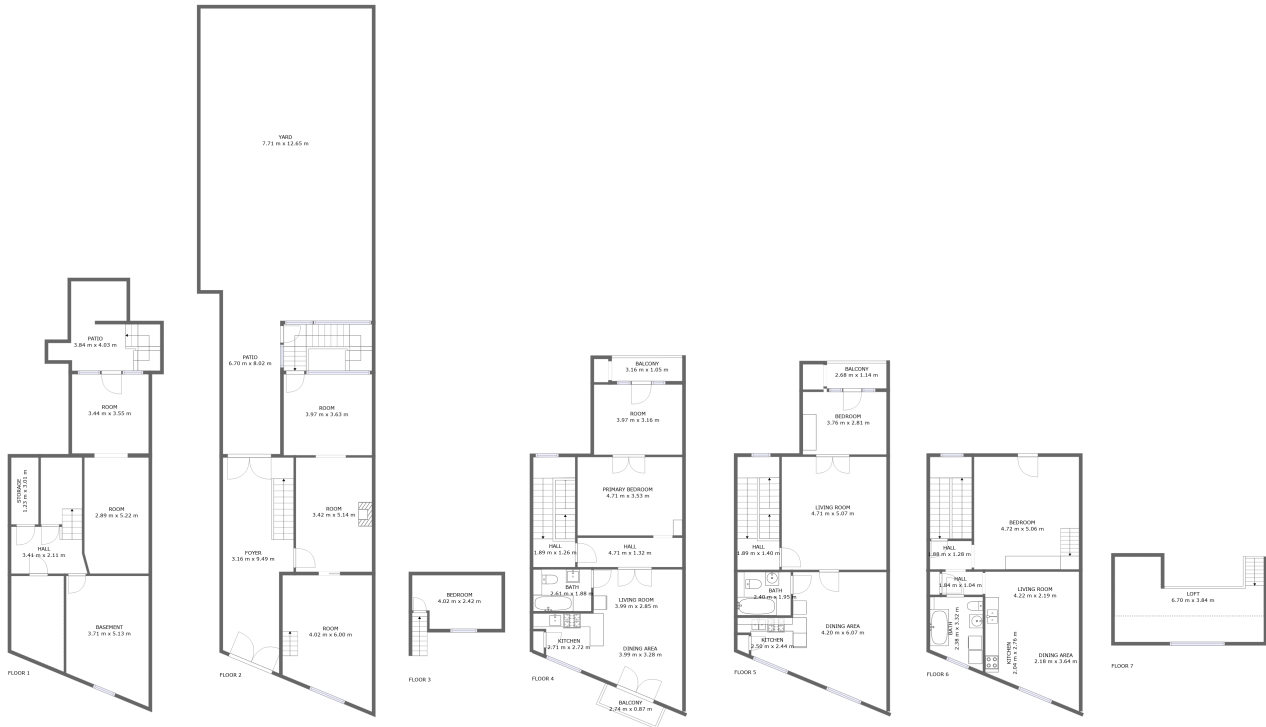




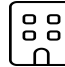
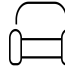



140 Chaussée De Bruxelles - Brusselse Steenweg, Vorst, Forest, Région de Bruxelles-

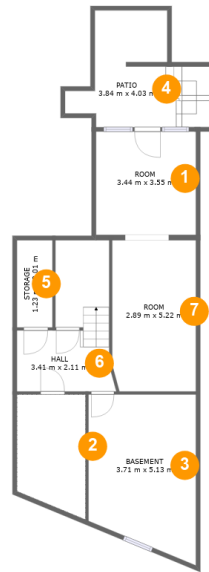


Property Summary

 **0** garages
  **4** bedrooms
  **3** bathrooms
  **0** half baths

 **7** floors
  **332** Gross Living Area sqm
  **477** total sqm

140 Chaussée De Bruxelles - Brusselse Steenweg, Vorst, Forest, Région de Bruxelles-



Room Dimensions

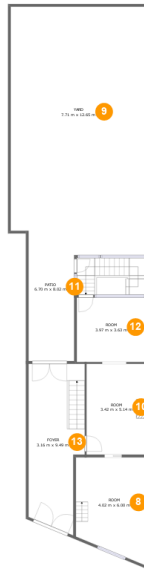
Floor 1

Total sqm: 89

Living area: 0

#	Room name	Dimensions	Area (sqm)	Counted as Living Area
1	Room	3.44 m x 3.55 m	12 m ²	No
2	Crawl Space	2.37 m x 3.83 m	9 m ²	No
3	Basement	3.71 m x 5.13 m	19 m ²	No
4	Patio	3.84 m x 4.03 m	14 m ²	No
5	Storage	1.23 m x 3.01 m	4 m ²	No
6	Hall	3.41 m x 2.11 m	13 m ²	No
7	Room	2.89 m x 5.22 m	15 m ²	No

140 Chaussée De Bruxelles - Brusselse Steenweg, Vorst, Forest, Région de Bruxelles-

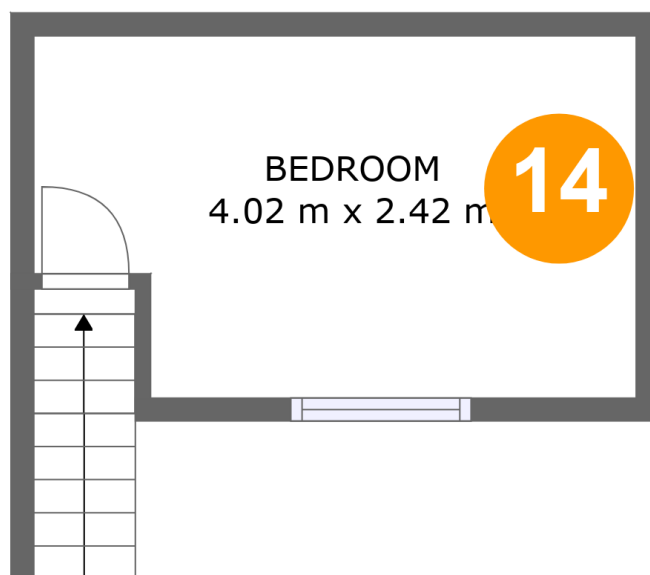


Room Dimensions

Floor 2**Total sqm: 120****Living area: 91**

#	Room name	Dimensions	Area (sqm)	Counted as Living Area
8	Room	4.02 m x 6.00 m	21 m ²	Yes
9	Yard	7.71 m x 12.65 m	93 m ²	No
10	Room	3.42 m x 5.14 m	18 m ²	Yes
11	Patio	6.70 m x 8.02 m	29 m ²	No
12	Room	3.97 m x 3.63 m	14 m ²	Yes
13	Foyer	3.16 m x 9.49 m	27 m ²	Yes

140 Chaussée De Bruxelles - Brusselse Steenweg, Vorst, Forest, Région de Bruxelles-



Room Dimensions

Floor 3

Total sqm: 11

Living area: 11

#	Room name	Dimensions	Area (sqm)	Counted as Living Area
14	Bedroom	4.02 m x 2.42 m	9 m2	Yes

140 Chaussée De Bruxelles - Brusselse Steenweg, Vorst, Forest, Région de Bruxelles-



Room Dimensions

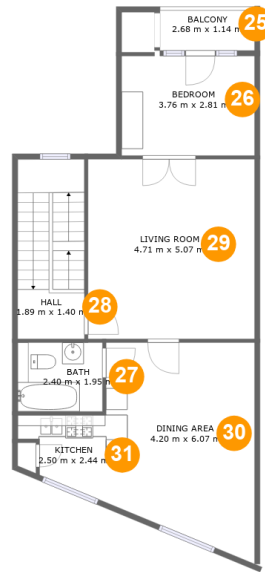
Floor 4

Total sqm: 87

Living area: 80

#	Room name	Dimensions	Area (sqm)	Counted as Living Area
15	Bath	2.61 m x 1.88 m	5 m ²	Yes
16	Dining Area	3.99 m x 3.28 m	11 m ²	Yes
17	Balcony	2.74 m x 0.87 m	3 m ²	No
18	Hall	1.89 m x 1.26 m	9 m ²	Yes
19	Kitchen	2.71 m x 2.72 m	5 m ²	Yes
20	Room	3.97 m x 3.16 m	13 m ²	Yes
21	Balcony	3.16 m x 1.05 m	3 m ²	No
22	Living Room	3.99 m x 2.85 m	11 m ²	Yes
23	Primary Bedroom	4.71 m x 3.53 m	17 m ²	Yes
24	Hall	4.71 m x 1.32 m	6 m ²	Yes

140 Chaussée De Bruxelles - Brusselse Steenweg, Vorst, Forest, Région de Bruxelles-



Room Dimensions

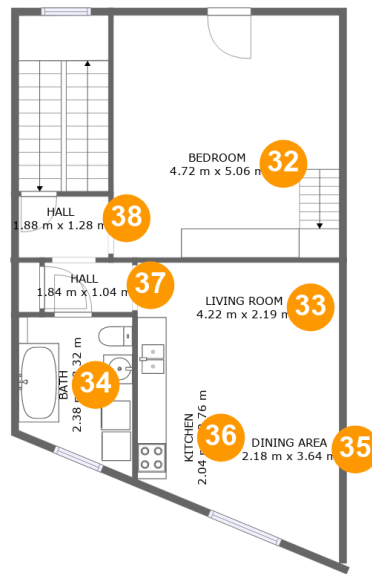
Floor 5

Total sqm: 83

Living area: 79

#	Room name	Dimensions	Area (sqm)	Counted as Living Area
25	Balcony	2.68 m x 1.14 m	3 m ²	No
26	Bedroom	3.76 m x 2.81 m	11 m ²	Yes
27	Bath	2.40 m x 1.95 m	5 m ²	Yes
28	Hall	1.89 m x 1.40 m	10 m ²	Yes
29	Living Room	4.71 m x 5.07 m	24 m ²	Yes
30	Dining Area	4.20 m x 6.07 m	23 m ²	Yes
31	Kitchen	2.50 m x 2.44 m	4 m ²	Yes

140 Chaussée De Bruxelles - Brusselse Steenweg, Vorst, Forest, Région de Bruxelles-



Room Dimensions

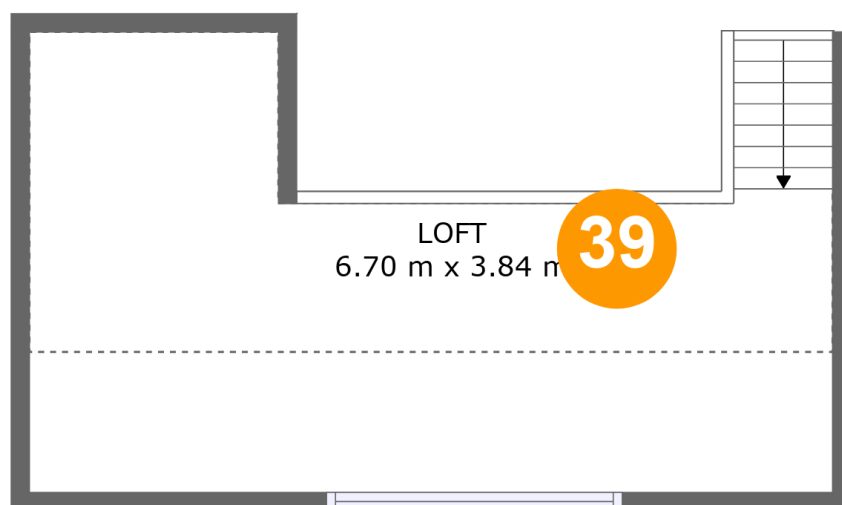
Floor 6

Total sqm: 67

Living area: 59

#	Room name	Dimensions	Area (sqm)	Counted as Living Area
32	Bedroom	4.72 m x 5.06 m	16 m ²	Yes
33	Living Room	4.22 m x 2.19 m	9 m ²	Yes
34	Bath	2.38 m x 3.32 m	7 m ²	Yes
35	Dining Area	2.18 m x 3.64 m	8 m ²	Yes
36	Kitchen	2.04 m x 2.76 m	6 m ²	Yes
37	Hall	1.84 m x 1.04 m	2 m ²	Yes
38	Hall	1.88 m x 1.28 m	2 m ²	Yes

140 Chaussée De Bruxelles - Brusselse Steenweg, Vorst, Forest, Région de Bruxelles-



Room Dimensions

Floor 7

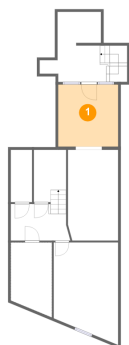
Total sqm: 20

Living area: 12

#	Room name	Dimensions	Area (sqm)	Counted as Living Area
39	Loft	6.70 m x 3.84 m	12 m ²	Yes

140 Chaussée De Bruxelles - Brusselse Steenweg, Vorst, Forest, Région de Bruxelles-

1 Floor 1 - Room



Dimensions: 3.44 m x 3.55 m

Area: 12 m²

Counted as Living Area: No

Heated: Yes

Finished: Yes

Enclosed: Yes

Contiguous:

No

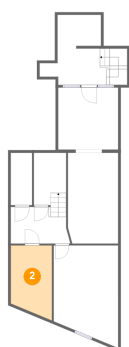
Permitted: Yes

Wet Space: No

Addition: No

Conversion: No

2 Floor 1 - Crawl Space



Dimensions: 2.37 m x 3.83 m

Area: 9 m²

Counted as Living Area: No

Heated: No

Finished: No

Enclosed: No

Contiguous:

Yes

Permitted: No

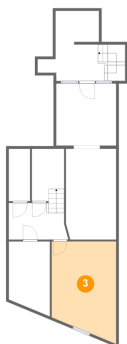
Wet Space: No

Addition: No

Conversion: No

140 Chaussée De Bruxelles - Brusselse Steenweg, Vorst, Forest, Région de Bruxelles-

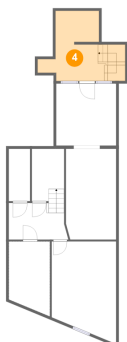
3 Floor 1 - Basement



Dimensions: 3.71 m x 5.13 m
Area: 19 m²
Counted as Living Area: No

Heated: No
Finished: Yes
Enclosed: Yes
Contiguous: Yes
Permitted: Yes
Wet Space: No
Addition: No
Conversion: No

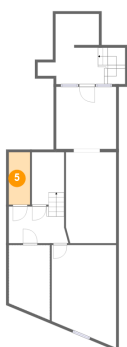
4 Floor 1 - Patio



Dimensions: 3.84 m x 4.03 m
Area: 14 m²
Counted as Living Area: No

Heated: No
Finished: Yes
Enclosed: No
Contiguous: Yes
Permitted: Yes
Wet Space: No
Addition: No
Conversion: No

5 Floor 1 - Storage

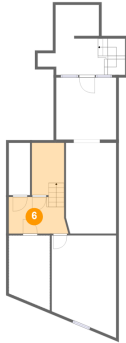


Dimensions: 1.23 m x 3.01 m
Area: 4 m²
Counted as Living Area: No

Heated: No
Finished: No
Enclosed: No
Contiguous: Yes
Permitted: Yes
Wet Space: No
Addition: No
Conversion: No

140 Chaussée De Bruxelles - Brusselse Steenweg, Vorst, Forest, Région de Bruxelles-

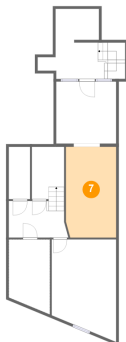
6 Floor 1 - Hall



Dimensions: 3.41 m x 2.11 m
Area: 13 m²
Counted as Living Area: No

Heated: Yes
Finished: Yes
Enclosed: Yes
Contiguous: No
Permitted: Yes
Wet Space: No
Addition: No
Conversion: No

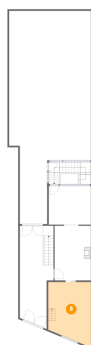
7 Floor 1 - Room



Dimensions: 2.89 m x 5.22 m
Area: 15 m²
Counted as Living Area: No

Heated: Yes
Finished: Yes
Enclosed: Yes
Contiguous: No
Permitted: Yes
Wet Space: No
Addition: No
Conversion: No

8 Floor 2 - Room

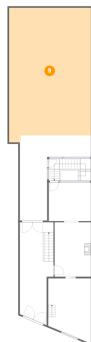


Dimensions: 4.02 m x 6.00 m
Area: 21 m²
Counted as Living Area: Yes

Heated: Yes
Finished: Yes
Enclosed: Yes
Contiguous: Yes
Permitted: Yes
Wet Space: No
Addition: No
Conversion: No

140 Chaussée De Bruxelles - Brusselse Steenweg, Vorst, Forest, Région de Bruxelles-

9 Floor 2 - Yard



Dimensions: 7.71 m x 12.65 m
Area: 93 m²
Counted as Living Area: No

Heated: No
Finished: No
Enclosed: No
Contiguous: Yes
Permitted: No
Wet Space: No
Addition: No
Conversion: No

10 Floor 2 - Room



Dimensions: 3.42 m x 5.14 m
Area: 18 m²
Counted as Living Area: Yes

Heated: Yes
Finished: Yes
Enclosed: Yes
Contiguous: Yes
Permitted: Yes
Wet Space: No
Addition: No
Conversion: No

11 Floor 2 - Patio



Dimensions: 6.70 m x 8.02 m
Area: 29 m²
Counted as Living Area: No

Heated: No
Finished: Yes
Enclosed: No
Contiguous: Yes
Permitted: Yes
Wet Space: No
Addition: No
Conversion: No

140 Chaussée De Bruxelles - Brusselse Steenweg, Vorst, Forest, Région de Bruxelles-

12 Floor 2 - Room



Dimensions: 3.97 m x 3.63 m
Area: 14 m²
Counted as Living Area: Yes

Heated: Yes
Finished: Yes
Enclosed: Yes
Contiguous: Yes
Permitted: Yes
Wet Space: No
Addition: No
Conversion: No

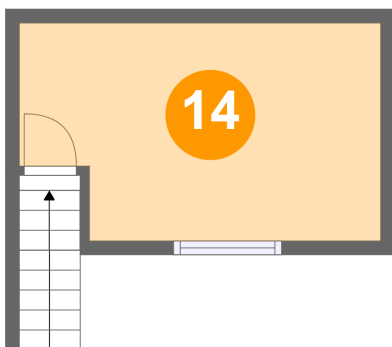
13 Floor 2 - Foyer



Dimensions: 3.16 m x 9.49 m
Area: 27 m²
Counted as Living Area: Yes

Heated: Yes
Finished: Yes
Enclosed: Yes
Contiguous: Yes
Permitted: Yes
Wet Space: No
Addition: No
Conversion: No

14 Floor 3 - Bedroom



Dimensions: 4.02 m x 2.42 m
Area: 9 m²
Counted as Living Area: Yes

Heated: Yes
Finished: Yes
Enclosed: Yes
Contiguous: Yes
Permitted: Yes
Wet Space: No
Addition: No
Conversion: No

140 Chaussée De Bruxelles - Brusselse Steenweg, Vorst, Forest, Région de Bruxelles-

15 Floor 4 - Bath



Dimensions: 2.61 m x 1.88 m
Area: 5 m²
Counted as Living Area: Yes

Heated: Yes
Finished: Yes
Enclosed: Yes
Contiguous: Yes
Permitted: Yes
Wet Space: Yes
Addition: No
Conversion: No

16 Floor 4 - Dining Area



Dimensions: 3.99 m x 3.28 m
Area: 11 m²
Counted as Living Area: Yes

Heated: Yes
Finished: Yes
Enclosed: Yes
Contiguous: Yes
Permitted: Yes
Wet Space: No
Addition: No
Conversion: No

17 Floor 4 - Balcony



Dimensions: 2.74 m x 0.87 m
Area: 3 m²
Counted as Living Area: No

Heated: No
Finished: Yes
Enclosed: No
Contiguous: Yes
Permitted: Yes
Wet Space: No
Addition: No
Conversion: No

140 Chaussée De Bruxelles - Brusselse Steenweg, Vorst, Forest, Région de Bruxelles-

18 Floor 4 - Hall



Dimensions: 1.89 m x 1.26 m
Area: 9 m²
Counted as Living Area: Yes

Heated: Yes
Finished: Yes
Enclosed: Yes
Contiguous: Yes
Permitted: Yes
Wet Space: No
Addition: No
Conversion: No

19 Floor 4 - Kitchen



Dimensions: 2.71 m x 2.72 m
Area: 5 m²
Counted as Living Area: Yes

Heated: Yes
Finished: Yes
Enclosed: Yes
Contiguous: Yes
Permitted: Yes
Wet Space: No
Addition: No
Conversion: No

20 Floor 4 - Room

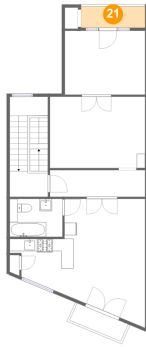


Dimensions: 3.97 m x 3.16 m
Area: 13 m²
Counted as Living Area: Yes

Heated: Yes
Finished: Yes
Enclosed: Yes
Contiguous: Yes
Permitted: Yes
Wet Space: No
Addition: No
Conversion: No

140 Chaussée De Bruxelles - Brusselse Steenweg, Vorst, Forest, Région de Bruxelles-

21 Floor 4 - Balcony



Dimensions: 3.16 m x 1.05 m
Area: 3 m²
Counted as Living Area: No

Heated: No
Finished: Yes
Enclosed: No
Contiguous: Yes
Permitted: Yes
Wet Space: No
Addition: No
Conversion: No

22 Floor 4 - Living Room



Dimensions: 3.99 m x 2.85 m
Area: 11 m²
Counted as Living Area: Yes

Heated: Yes
Finished: Yes
Enclosed: Yes
Contiguous: Yes
Permitted: Yes
Wet Space: No
Addition: No
Conversion: No

23 Floor 4 - Primary Bedroom



Dimensions: 4.71 m x 3.53 m
Area: 17 m²
Counted as Living Area: Yes

Heated: Yes
Finished: Yes
Enclosed: Yes
Contiguous: Yes
Permitted: Yes
Wet Space: No
Addition: No
Conversion: No

140 Chaussée De Bruxelles - Brusselse Steenweg, Vorst, Forest, Région de Bruxelles-

24 Floor 4 - Hall



Dimensions: 4.71 m x 1.32 m
Area: 6 m²
Counted as Living Area: Yes

Heated: Yes
Finished: Yes
Enclosed: Yes
Contiguous: Yes
Permitted: Yes
Wet Space: No
Addition: No
Conversion: No

25 Floor 5 - Balcony



Dimensions: 2.68 m x 1.14 m
Area: 3 m²
Counted as Living Area: No

Heated: No
Finished: Yes
Enclosed: No
Contiguous: Yes
Permitted: Yes
Wet Space: No
Addition: No
Conversion: No

26 Floor 5 - Bedroom



Dimensions: 3.76 m x 2.81 m
Area: 11 m²
Counted as Living Area: Yes

Heated: Yes
Finished: Yes
Enclosed: Yes
Contiguous: Yes
Permitted: Yes
Wet Space: No
Addition: No
Conversion: No

140 Chaussée De Bruxelles - Brusselse Steenweg, Vorst, Forest, Région de Bruxelles-

27 Floor 5 - Bath



Dimensions: 2.40 m x 1.95 m
Area: 5 m²
Counted as Living Area: Yes

Heated: Yes
Finished: Yes
Enclosed: Yes
Contiguous: Yes
Permitted: Yes
Wet Space: Yes
Addition: No
Conversion: No

28 Floor 5 - Hall



Dimensions: 1.89 m x 1.40 m
Area: 10 m²
Counted as Living Area: Yes

Heated: Yes
Finished: Yes
Enclosed: Yes
Contiguous: Yes
Permitted: Yes
Wet Space: No
Addition: No
Conversion: No

29 Floor 5 - Living Room



Dimensions: 4.71 m x 5.07 m
Area: 24 m²
Counted as Living Area: Yes

Heated: Yes
Finished: Yes
Enclosed: Yes
Contiguous: Yes
Permitted: Yes
Wet Space: No
Addition: No
Conversion: No

140 Chaussée De Bruxelles - Brusselse Steenweg, Vorst, Forest, Région de Bruxelles-

30 Floor 5 - Dining Area



Dimensions: 4.20 m x 6.07 m
Area: 23 m²
Counted as Living Area: Yes

Heated: Yes
Finished: Yes
Enclosed: Yes
Contiguous: Yes
Permitted: Yes
Wet Space: No
Addition: No
Conversion: No

31 Floor 5 - Kitchen



Dimensions: 2.50 m x 2.44 m
Area: 4 m²
Counted as Living Area: Yes

Heated: Yes
Finished: Yes
Enclosed: Yes
Contiguous: Yes
Permitted: Yes
Wet Space: No
Addition: No
Conversion: No

32 Floor 6 - Bedroom



Dimensions: 4.72 m x 5.06 m
Area: 16 m²
Counted as Living Area: Yes

Heated: Yes
Finished: Yes
Enclosed: Yes
Contiguous: Yes
Permitted: Yes
Wet Space: No
Addition: No
Conversion: No

140 Chaussée De Bruxelles - Brusselse Steenweg, Vorst, Forest, Région de Bruxelles-

33 Floor 6 - Living Room



Dimensions: 4.22 m x 2.19 m
Area: 9 m²
Counted as Living Area: Yes

Heated: Yes
Finished: Yes
Enclosed: Yes
Contiguous: Yes
Permitted: Yes
Wet Space: No
Addition: No
Conversion: No

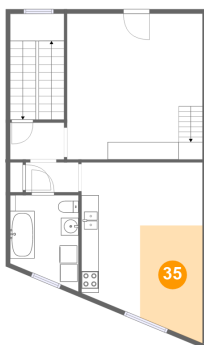
34 Floor 6 - Bath



Dimensions: 2.38 m x 3.32 m
Area: 7 m²
Counted as Living Area: Yes

Heated: Yes
Finished: Yes
Enclosed: Yes
Contiguous: Yes
Permitted: Yes
Wet Space: Yes
Addition: No
Conversion: No

35 Floor 6 - Dining Area

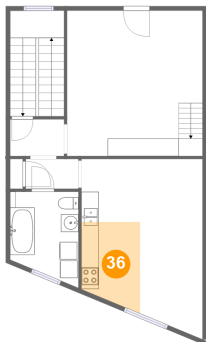


Dimensions: 2.18 m x 3.64 m
Area: 8 m²
Counted as Living Area: Yes

Heated: Yes
Finished: Yes
Enclosed: Yes
Contiguous: Yes
Permitted: Yes
Wet Space: No
Addition: No
Conversion: No

140 Chaussée De Bruxelles - Brusselse Steenweg, Vorst, Forest, Région de Bruxelles-

36 Floor 6 - Kitchen



Dimensions: 2.04 m x 2.76 m
Area: 6 m²
Counted as Living Area: Yes

Heated: Yes
Finished: Yes
Enclosed: Yes
Contiguous: Yes
Permitted: Yes
Wet Space: No
Addition: No
Conversion: No

37 Floor 6 - Hall



Dimensions: 1.84 m x 1.04 m
Area: 2 m²
Counted as Living Area: Yes

Heated: Yes
Finished: Yes
Enclosed: Yes
Contiguous: Yes
Permitted: Yes
Wet Space: No
Addition: No
Conversion: No

38 Floor 6 - Hall



Dimensions: 1.88 m x 1.28 m
Area: 2 m²
Counted as Living Area: Yes

Heated: Yes
Finished: Yes
Enclosed: Yes
Contiguous: Yes
Permitted: Yes
Wet Space: No
Addition: No
Conversion: No

140 Chaussée De Bruxelles - Brusselse Steenweg, Vorst, Forest, Région de Bruxelles-

39 Floor 7 - Loft



Dimensions: 6.70 m x 3.84 m
Area: 12 m²
Counted as Living Area: Yes

Heated: Yes
Finished: Yes
Enclosed: Yes
Contiguous: Yes
Permitted: Yes
Wet Space: No
Addition: No
Conversion: No